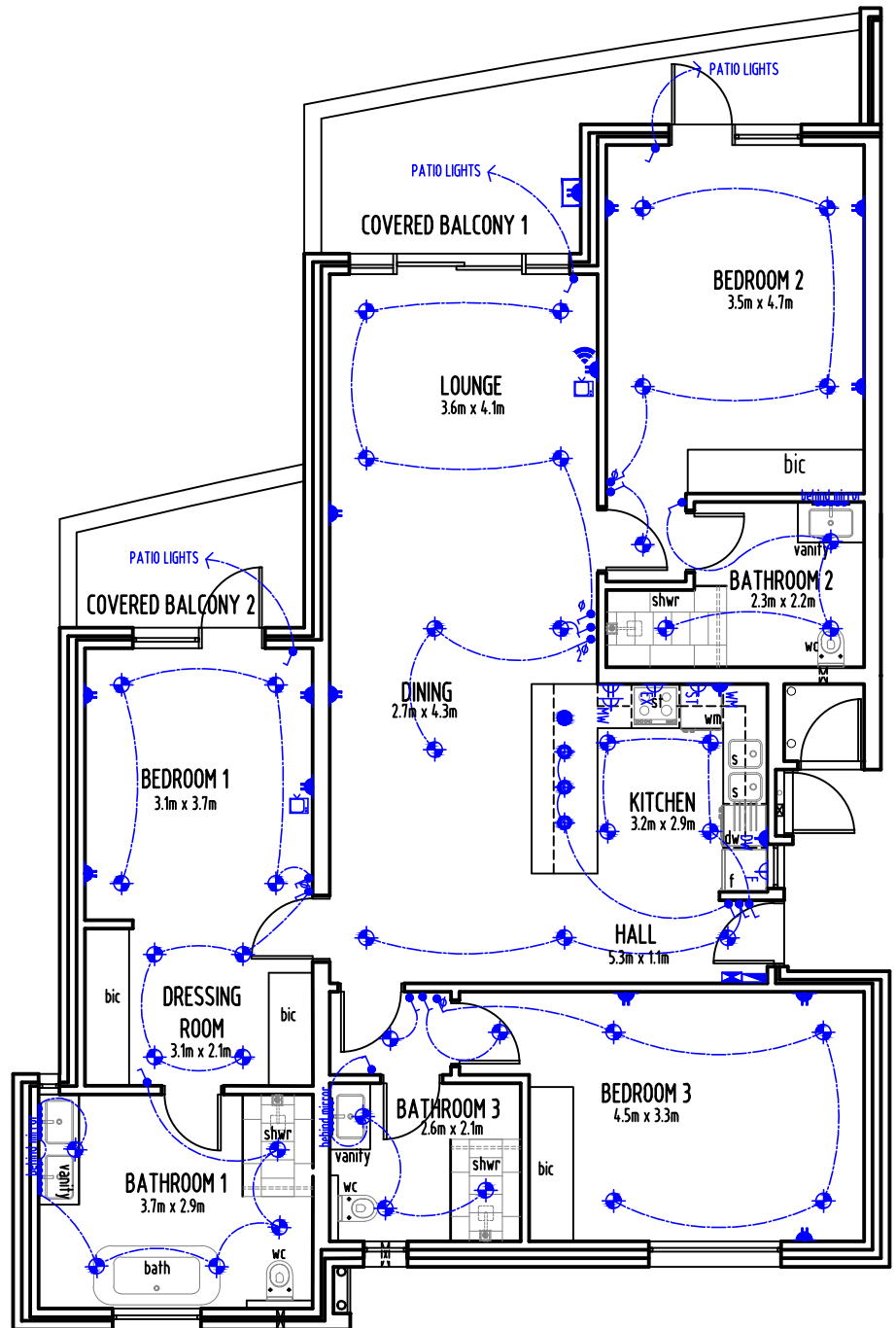


# UNIT TYPE Cm

## SECTIONAL TITLE AREA

3 BED + 3 BATH	
UNIT FLOOR AREA:	134.14 m <sup>2</sup>
COVERED BALCONY 1:	11.51 m <sup>2</sup>
COVERED BALCONY 2:	5.11 m <sup>2</sup>
TOTAL UNIT AREA:	150.76 m <sup>2</sup>



### ELECTRICAL LEGEND

- |  |   |  |   |
|--|---|--|---|
|  | SINGLE LIGHT SWITCH   |  | EXTERNAL DOUBLE SOCKET OUTLET                                   |
|  | DIMMER LIGHTSWITCH  |  | POP UP VERTICAL POWER DOCK SURFACE MOUNTED ON ISLAND COUNTERTOP |
|  | 2-WAY SWITCH  |  | T.V. POINT  |
|  | SINGLE SOCKET OUTLET (300mm AFFL)   |  | PRE-PAID ELECTRICITY CONTROL PANEL                              |
|  | DOUBLE SOCKET OUTLET (300mm AFFL)   |  | DISTRIBUTION BOARD  |
|  | DOUBLE SOCKET OUTLET: DW & WH (300mm AFFL)                                  |  | WiFi ROUTER ACCESS POINT  |
|  | SINGLE SOCKET OUTLET (150mm ABOVE COUNTER)                                  |  | ABV CNTR ABOVE COUNTER L.E.D. LIGHT STRIPS                      |
|  | DOUBLE SOCKET OUTLET (150mm ABOVE COUNTER)                                  |  | INTERNAL CEILING/SOFFT MOUNTED L.E.D. DOWN LIGHTER FITTING      |
|  | SINGLE SOCKET OUTLET: FRIDGE (150mm ABOVE COUNTER)                          |  | EXTERNAL CEILING/SOFFT MOUNTED L.E.D. DOWN LIGHTER FITTING      |
|  | STOVE ISOLATOR (150mm ABOVE COUNTER)  |  | PENDANT LIGHT FITTING   |
|  | SINGLE SOCKET OUTLET: MICROWAVE (1600mm AFFL)                               |  |   |
|  | SINGLE SOCKET OUTLET: EXTRACTOR FAN (inside cupboard above stove/extractor) |  |   |

# UNIT TYPE Cm - 1st to 5th FLOORS